

The information contained in this document as (hereinafter, an independent third party), YG does not responsible for the accuracy, fairness and completeness of any information contained in this document. You should not assume any information in this document to be accurate, fair or complete. The information or opinions contained in this document is provided on a speculative basis which YG reserves all right to update. YG has no obligation to notify you of any updates after a specific date or any development of information in the documents. YG will not accept any liability, or any loss resulting from the use of this document or its contents or for other reasons related to this document.

This document does not constitute an offer or solicitation of an offer of purchase or acquisition to sell or issue shares of YG or any of its subsidiaries or related parties in any jurisdiction, does not serve as a part of an offer or incentive nor should be interpreted as such. In part thereof distribute the facts does not constitute the basis of any contract or commitment and should not be relied upon in respect of any contract or commitment.

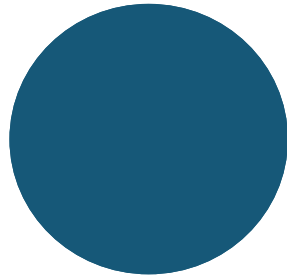
Your acceptance of this document constitutes your agreement that the information contained in the document is kept strictly confidential, securities researchers should have eligibility of the securities research and follow any relevant securities laws and regulations and restrictions of the appropriate jurisdiction before publishing research results on YG.

This document is provided for the securities researchers use as their research reference only, in part of the document cannot be photocopied, copied, or otherwise, directly, or indirectly, transferred to any other person or for public announcement or any other purpose.





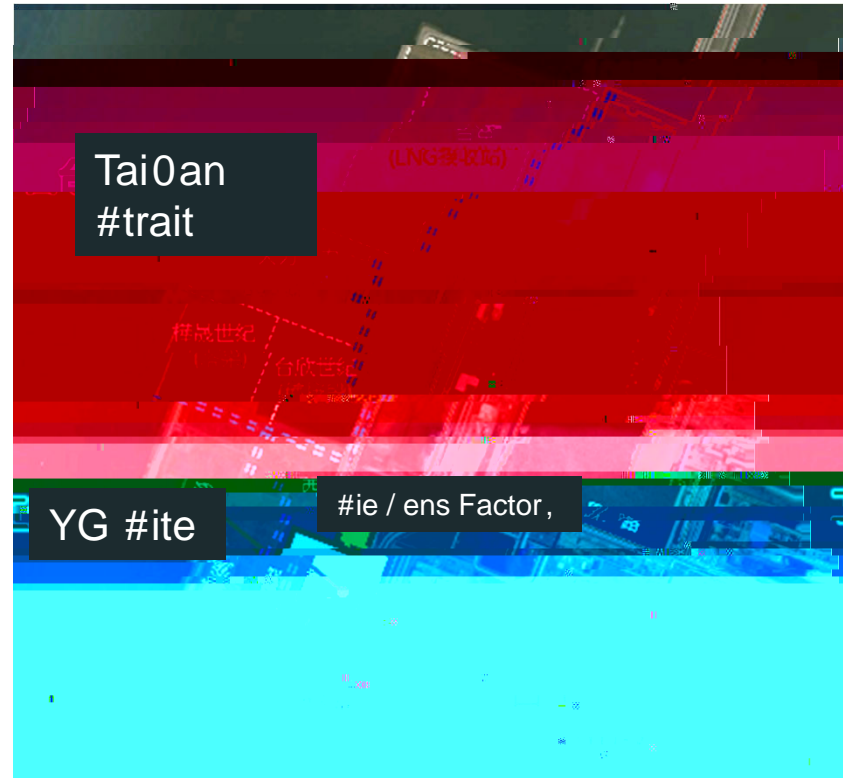




5e0

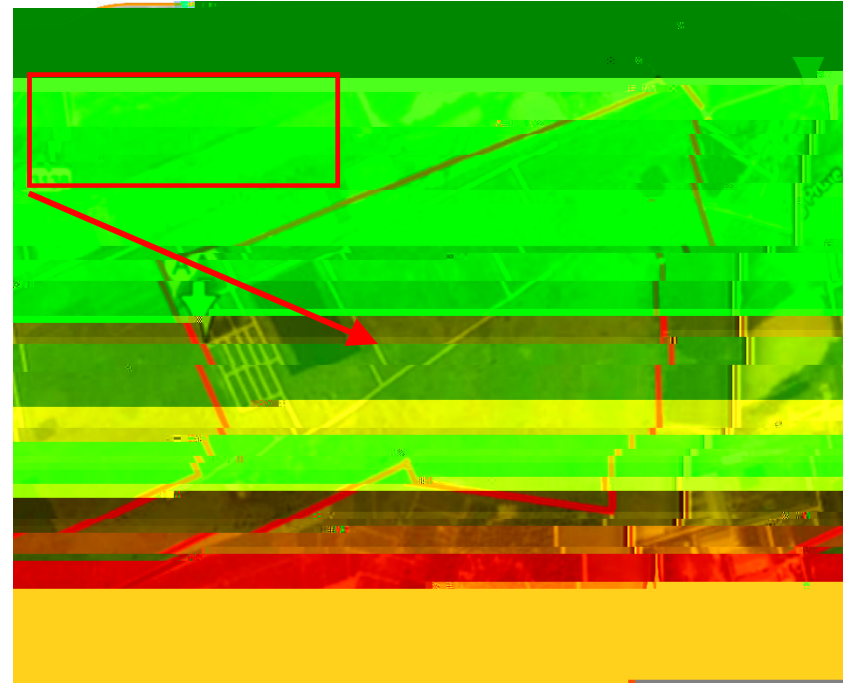
))

Ti / eline " onstruction starte in 2020-
 targeting trial pro uction 1, Q2 2022.
 " apacit, @ 80-000%100-000 tonsA, ear.
 :5 ' 1, 202B- ;0 ' 1, 202:- 80 ' 1, 2025
) (antages@
 " usto / ers near1, (#ie / ensAM* \$ &)
 !ocaliCation re2uire / ents
 +roDi / it, to har1or
 Go(ern / ent incenti(es
 E# #uppl, " hain Focuse
 " apeD
 +hase 1@ 5TF 5.221n to reach :54 output



Recei(e " onstruction !icense in / i ?anuar, 2021.
 " onstruction un er0a, per original plans.





Thailand's 90-year-old government is re-evaluating Yeong Guan's application in the process.





+ , - (.
7e(elop ne0 custo / ers 0ith the glo1al
econo / ic reco(er,



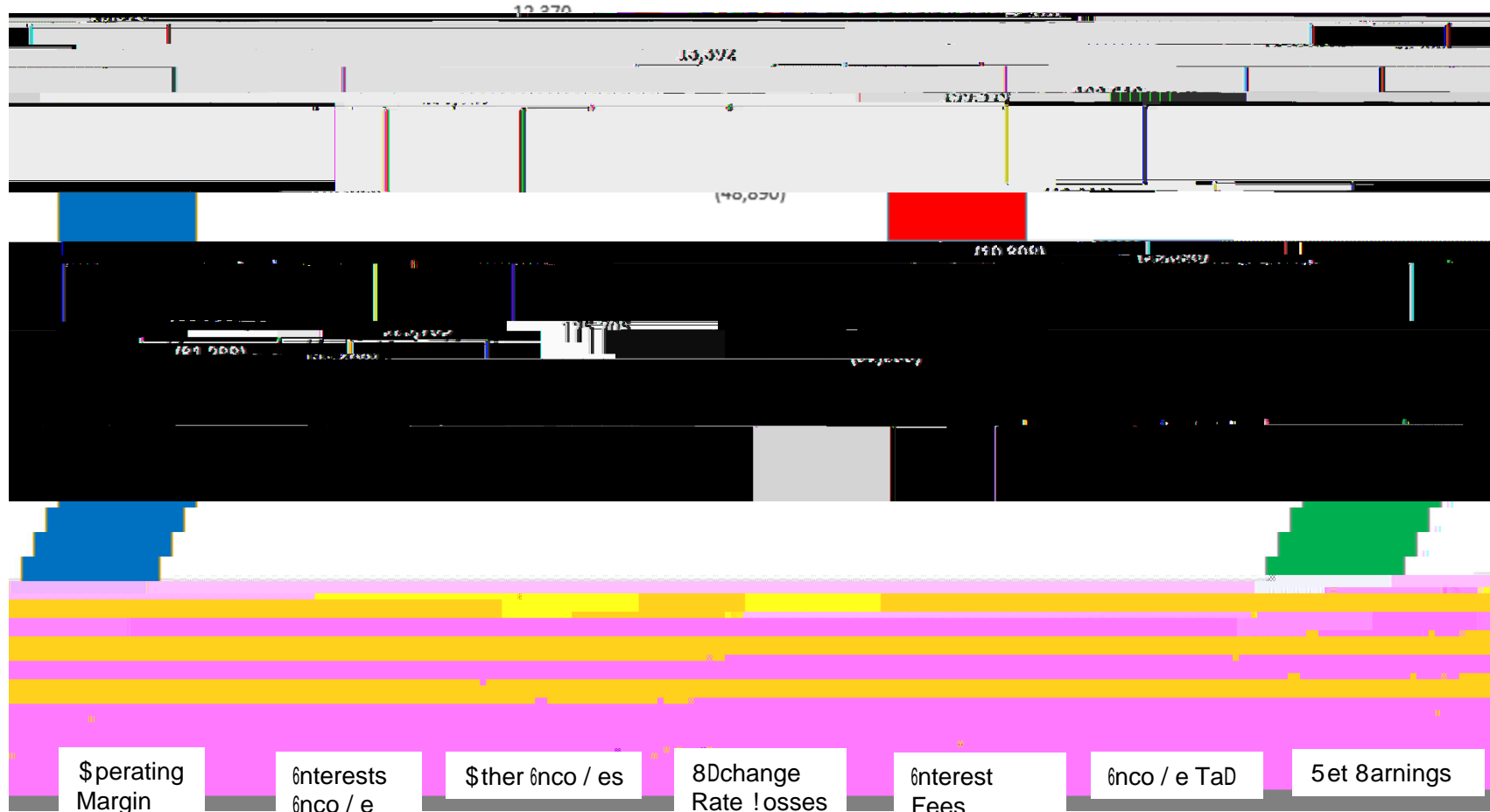


Due to growing demand for plastic injection molding in industrial machinery, sectors-
2021 Q1's revenue and profit (both) reaches new heights since 2012.



+ 5 " (

Enit 5TF Thousan



)

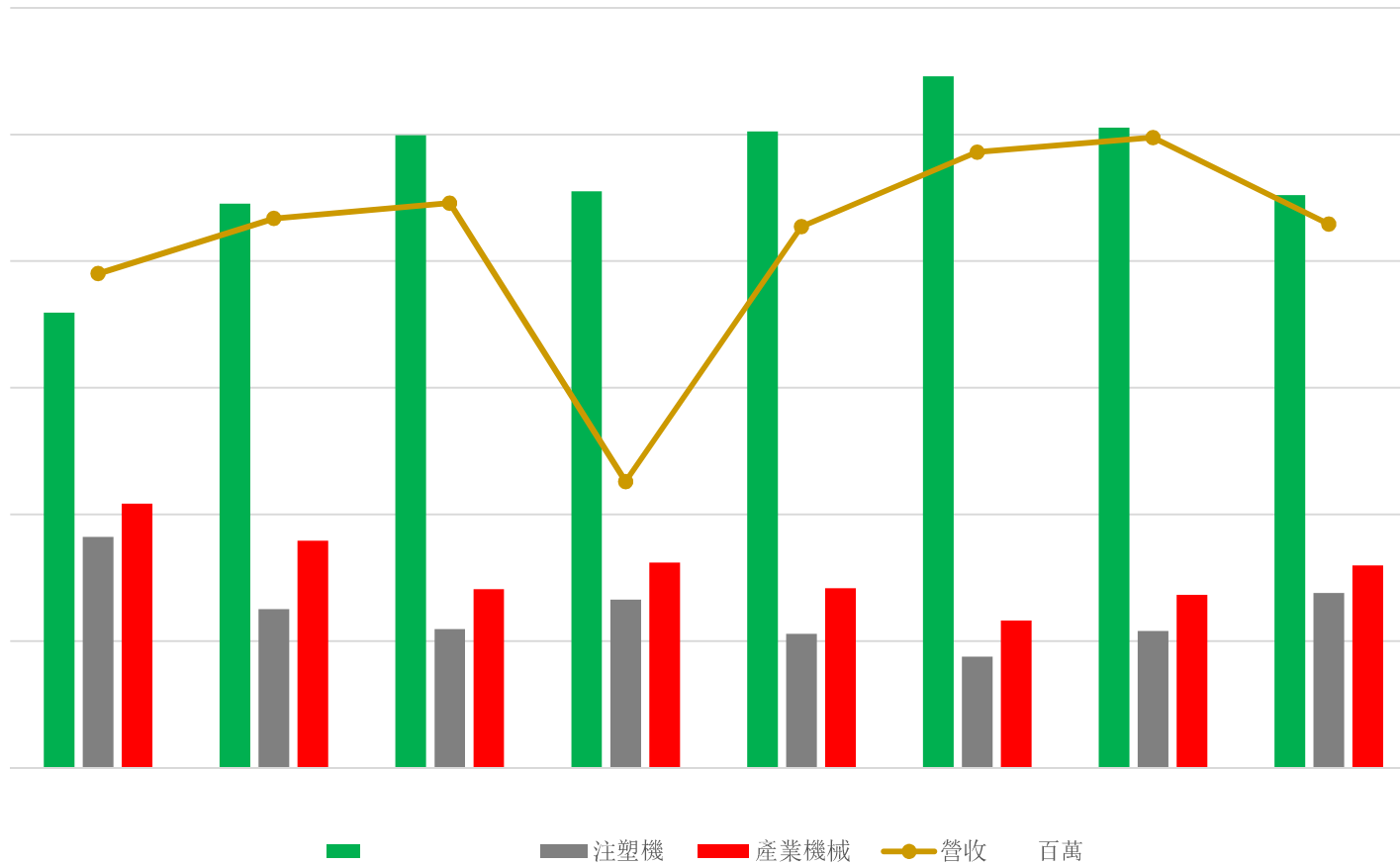
67

(7

2 8

2021 Q1 Revenue Comparison: Industrial Machinery (21.8B) vs. Plastic Machinery (18.7B)

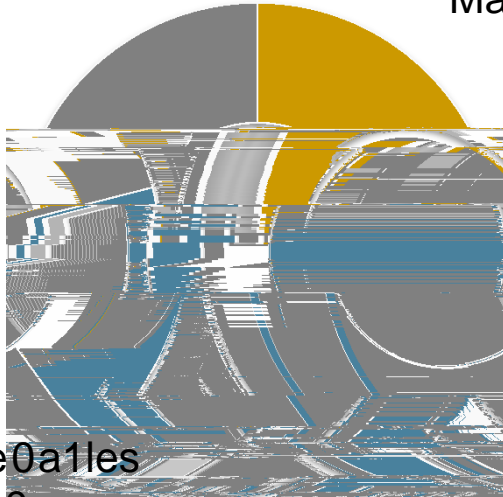
Industrial Machinery Revenue (21.8B) vs. Plastic Machinery Revenue (18.7B)



2 3 " (

2 3 8("## ,9.

2 3 8(* (,9.



Industrial
Machinery,
21>

Section
Molding
Machines
19>

Renovables
;0>

8ER 5T7
5> :>

E#7 RM9
1:> <<>

7

| | | | | | |
|------------|-----------|-----------|--------|-----------|--------|
| & + | | ! | | | : : |
| 2 3 | 2-1:5-<08 | 2-:8<-809 | %1: > | 1-1B0-199 | 90 > |
| ;) 1 | 550-;0< | ;1;-0<: | %11 > | 12;-51; | BB5 > |
| ; | 2; > | 25 > | l1++ | 11 > | l15++ |
| # 5\$# | B51-088 | :0:-1:B | %1B > | 2B<-8<: | :8 > |
| # 7 | 199-519 | 211-9B1 | %; > | (111-B58) | 2<9 > |
| #) 1 2 | 9 > | 9 > | 0++ | (10) | ↑19++ |
| + # 7 | (:2-52;) | :9-8<1 | %185 > | (1;-; ;8) | %155 > |
|) 1 8 1 \$ | 15;-99B | 2;1-802 | %:0 > | (128-02;) | %22B > |
|) 1 1 \$ | 125-<05 | 229-; <8 | %:5 > | (112-8B0) | 211 > |
| 5) ,% 4+ . | 1.1B | 2.11 | | (1.0;) | |

%

| | | | | | |
|-----------|-------------|--------------|--------|-------------|--------|
| & + | | ! | | | : : |
| " | 1;-599-8:2 | 1;-B9:-B8; | 1.B> | 1B-2;9-<<9 | 25.1> |
| * | 1-9B5-2B1 | 2-;82-852 | %2<.9> | 1-B8:-<11 | B9.8> |
| +2 ' " 2 | B-5:0-:10 | B-51;-9B: | 0.<> | 2-1<1-125 | ;B.1> |
| 7 3 (| 1-:B0-90: | 1-B2:-:B: | 8.0> | 1-B:0-:58 | ;.<> |
| + - * " | <-; <B-<8< | ; -980-; 05 | 9.9> | ; -; 0B-5B< | 1; .2> |
| 0 8 | <-; <<-8:5 | <-; B0-::: | 0.; > | 5-; ; <-22: | B5.5> |
| % 0 | B-; 80-; 9B | B-: 98-085 | 5.2> | : -18B-919 | %12> |
| +) ' ") | 1-<08-8<9 | 1-; ; ; -B81 | B.8> | 81 :-; 89 | 109.8> |
| 5< (| 8-921-99< | 8-<; B-9:2 | 1.8> | <-; 02-555 | 1<.: > |
| * | 1-10;-1<5 | 1-10;-1<5 | | 1-05;-1<5 | |





Announced Jobs Plan spending by energy

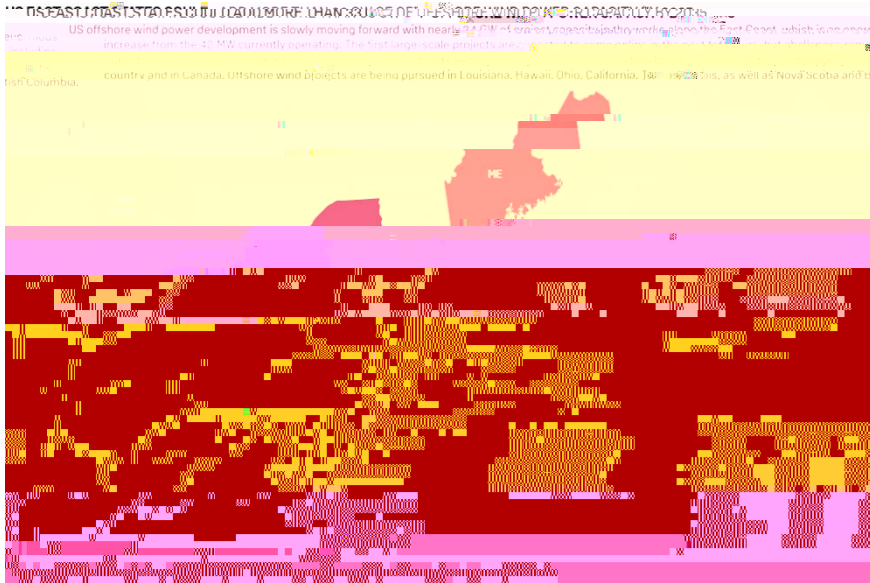
In billions

Transportation Water Oil and Gas Buildings R&D



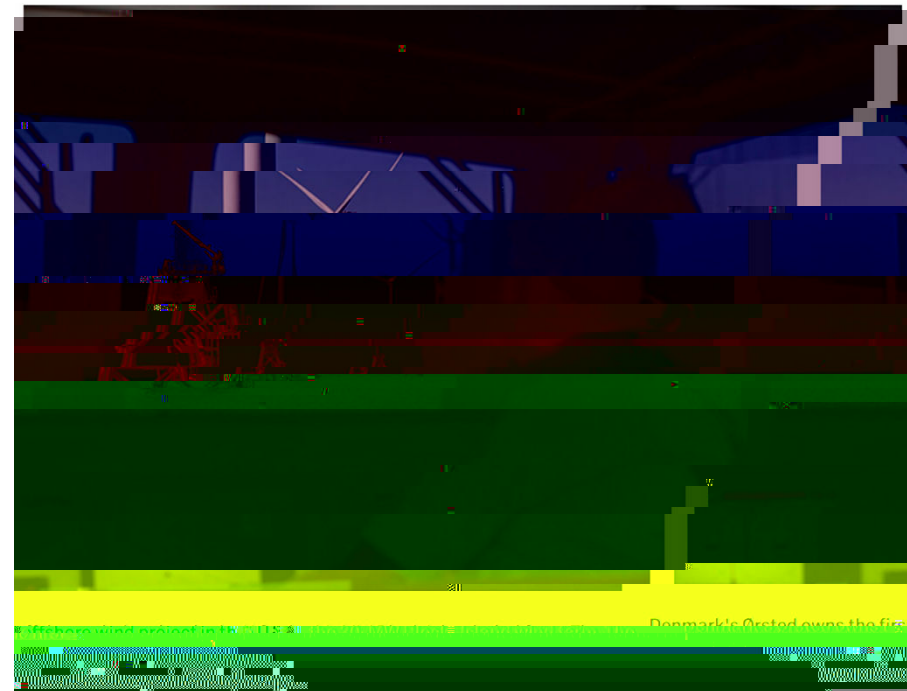
& >

3 #



In 2020- E# installed 1< G& o. ne0 0in energy, - eDpects to a 21 G& / ore in 2021

*arious #tates e declares 20B0 0in energy, installation targets 0 5e0 Yor4 B0 G&- " ali.ornia B0 G&- *irginia 12 G&- 5e0



9i en) / inistration0) chie(e net Cero greenhouse gas e / issions 1, 2050. 9, 20B0- re uce greenhouse gas e / issions 1, at least 50> co / pare to 2005 le(els 9uil B0 G& o. \$..shore &in 1, 20B0 E# 7epart / ent o. 8nerg, to spen E#7 B 1illion on o..shore 0in e(elop / ent

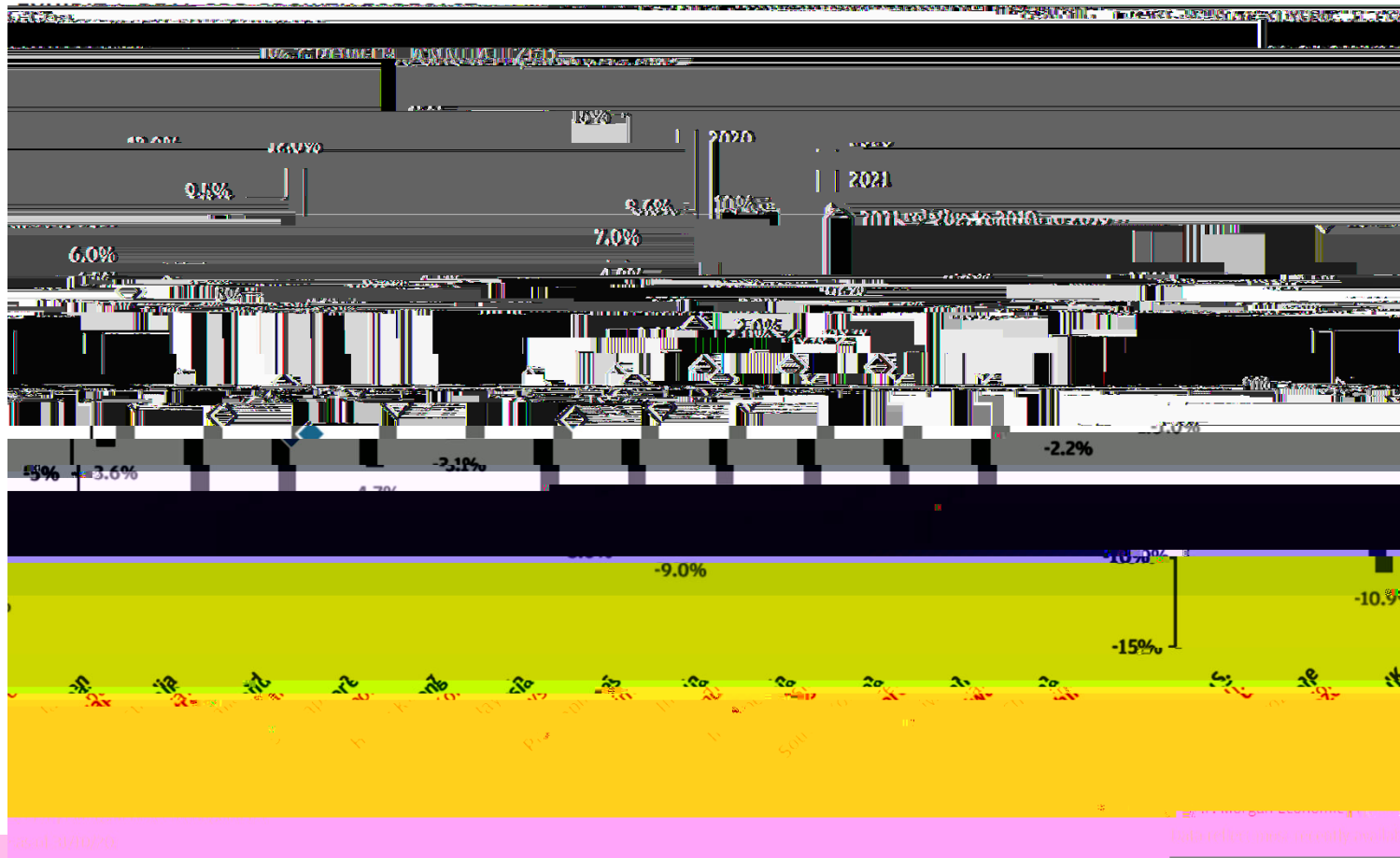


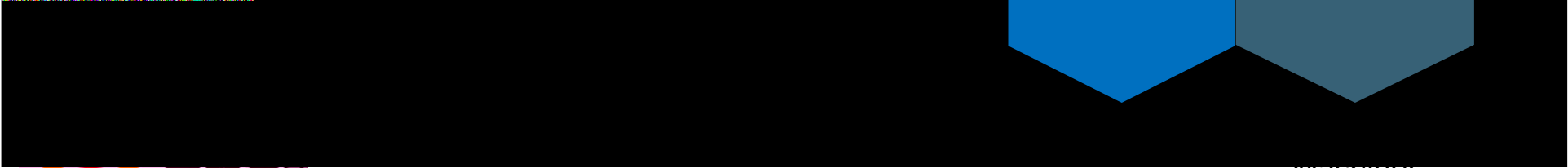
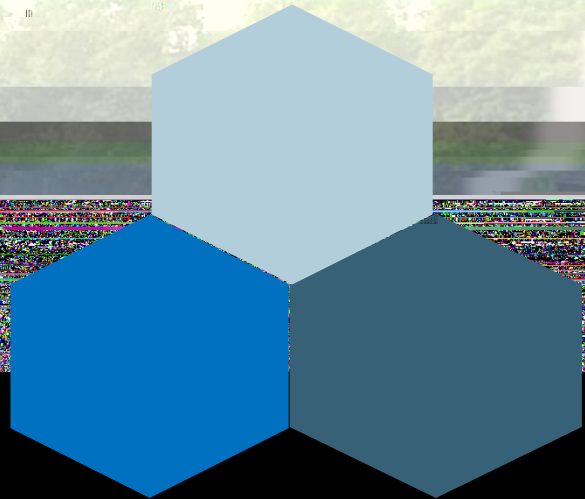
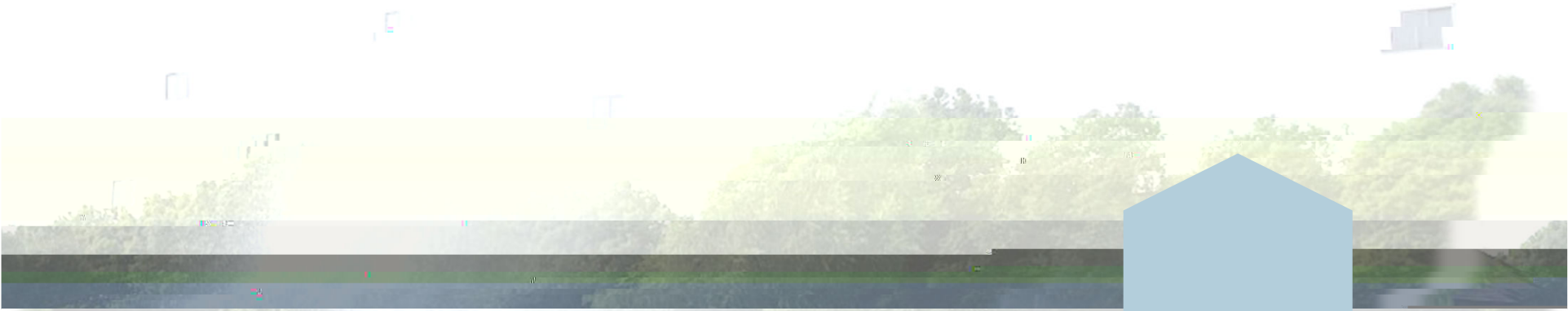
+lastic 6n3ection Mol ing in ustr, ser(es@
auto / oti(e- consu / er electronics- appliances-
.oo pac4aging etc.



") 1 2 0 5 2 3 (

#o / e) sian countries are eDpecte in 2021 to achie(e G7+ gro0th .ro / 2019 le(els
 7uring 2020- <5> o. Yeong Guan0 sales ca / e .ro / the) sia%+aci.ic region





Machiner,



| + 4 | | | | | | | |
|--------------|--|--|--|--|--|--|--|
| #ales Re(enu | | | | | | | |
| | | | | | | | |
| | | | | | | | |
| | | | | | | | |
| | | | | | | | |
| | | | | | | | |

| | | | | | | | |
|--|--|--|--|--|--|--|--|
| | | | | | | | |
| | | | | | | | |
| | | | | | | | |
| | | | | | | | |



(7





(1 (D



6n(estor Relations

'e(in s7p22-4.2735 () 2.596788(t)-i'

